



2015

SUSTAINABILITY REPORT

CLOVER

TABLE OF CONTENTS

Message from Our CEO 3

Scope & Purpose 4

Our Core Businesses 6

Doing Their Part 12

Packaging 22

Research & Development 24

Transportation & Logistics 28

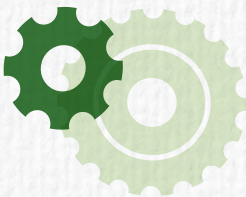
Energy & Gas Usage 30

Intellectual Property 32

Sustainable Programs 34

Clover Gives Back 38

Achievements, Awards
& Certifications 44



CONTACT
Ginger Leaven
Associate General Council
gleaven@clovertech.com

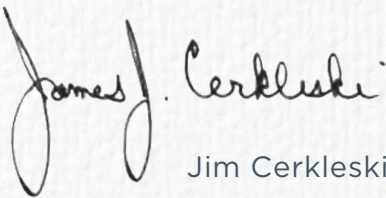
FROM OUR CEO

I am pleased to present Clover’s 2015 Sustainability Report. 2015 has been a year of remarkable change for the industries we serve, with both imaging and the wireless markets seeing tremendous changes in their business models. These changes have required Clover to lower our cost structure while maintaining quality. Our tagline for 2015 could be, “adapt to a world where forecasts change rapidly”. We are constantly adapting, improving and creating a more sustainable environment.

The core of Clover’s remanufacturing business is the concept of reuse. Reuse is a mindset that drives us to constantly seek productive and economically valuable uses not only for the products we remanufacture but for the components and by-products we generate in our reverse logistics and remanufacturing business. At every stage in our operations we strive to reuse material and give a second life to objects that would otherwise end up in a landfill. Whether it is in the remanufacturing of cartridges or the reuse of electronics, the goal is always to make the most of every single component possible. In this way, by the very nature of our operations we create sustainability and make a positive contribution to the environment, society and the communities we serve.

You will see in this year’s sustainability report that although our facilities span the globe, they share the common goal of taking into account environment consequences in all of our operations. We have found better, more efficient ways to reuse paper, to transport our goods and to use less energy, as well as ways to repurpose our surplus materials. Looking forward to 2016, we plan to continue these efforts and to focus on setting more defined goals for our programs to reduce energy, gas and water usage and to optimize our reuse of materials.

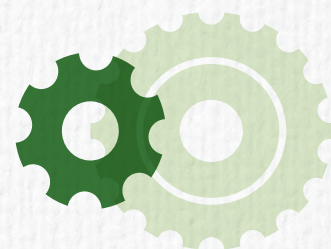
This report details our accomplishments in working towards a more sustainable environment, our commitment to producing quality products and our efforts in giving back to the community. I am very proud of what we’ve achieved and look forward to 2016.


Jim Cerkleski
CEO, Clover Technologies Group

◆ ◆ ◆ ◆ ◆ ◆ ◆ ◆

SCOPE &

== PURPOSE



SCOPE & PURPOSE

Clover's annual Sustainability Report details Clover's ongoing commitment to raising awareness, strengthening environmental objectives and empowering employees. This is the seventh year we have published this report, and we are proud of the strong foundation of environmental and community responsibility we have built. Highlights of 2015 include details on the recycling and philanthropy efforts at each of our global facilities. These individual efforts synergistically help us achieve our long-standing corporate goal of preserving the environment and making a difference in the communities where we live and work. We believe this steadfast commitment is reflected in our 2015 Sustainability Report.

REPORT SNAPSHOT

Net Revenue in 2015

\$1.061 Billion

Reporting Period

Calendar year 2015

Previous Report Issue Date

Dec. 8, 2015

Current Report Issue Date

April 22, 2016

Reporting Cycle

Annual

Scope

Global

Employees

Worldwide: 19,189

North America: 17,372

South America: 73

Europe: 1,075

Asia: 639

Oceania: 17

Central America: 9

COMPANY SNAPSHOT

Founded in 1996, Clover is a dynamic and fast growing company, employing over 19,000 associates with more than 60 worldwide manufacturing, distribution, collection and sales locations. Over the past few years, we have developed a diversified portfolio of imaging solutions and services, electronic asset life-cycle management solutions, and a comprehensive global reverse distribution network that collects ink, toner, cell phones, telecom equipment and small electronics.

OUR CORE

BUSINESSES

♦ ♦ ♦ ♦ ♦ ♦ ♦ ♦ ♦ ♦

GIVING NEW LIFE TO CARTRIDGES

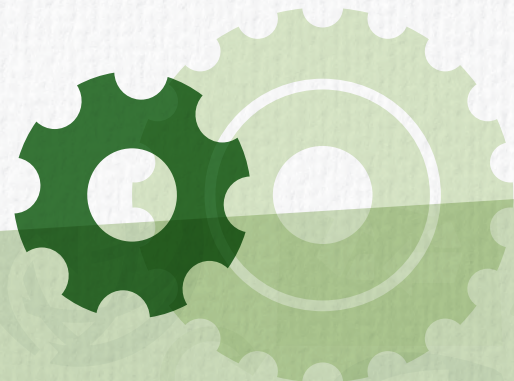
Reclamation Beyond Recycling

As the industry leading collector of empty cartridges, we have a responsibility to spearhead new and innovative ways to lessen our impact on the environment. One way we do this is through reclamation. Cartridges deemed end of life are first sent to our reclamation area. Here they are disassembled and key components are set aside for reuse – a higher level of sustainability. These components are then stored and used for remanufacturing our toner cartridges.

Collections

The collection and management of empty cartridges is essential to our remanufacturing efforts. Clover Environmental Solutions (CES) is the network of facilities that ensures proper management of this raw material. Clover has built up a reliable network of core collections to supply cartridges for remanufacturing.

There are 5 processing centers located in North America. These facilities process between 170,000 to 3,000,000 cartridges per month. Cartridges are collected from hundreds of thousands of collection points and from various sources, including customers, strategic partners, 3rd party companies and targeted collection programs. It is through our collection efforts that we are able to reclaim as much reusable material as possible, and minimize the amount of plastic and other material that would otherwise end up in landfills.



Remanufacturing

Clover has streamlined its remanufacturing in North America to include 3 facilities in the US and one in Mexico, thereby limiting its impact on natural resources and decreasing its global footprint. Outside of North America, there are facilities in Portugal, Serbia and Vietnam that follow the same core values and adherence to environmental considerations in the remanufacturing process. An exchange of ideas takes places between the manufacturing facilities in the U.S., Asia, Europe and Mexico with each country striving to develop creative and effective options for reusing, reducing, and recycling the byproduct of our operations.

OUR FACILITIES PROCESS
BETWEEN 170,000 TO 3,000,000
CARTRIDGES PER MONTH

Distribution

Our distribution channels span the globe. From our remanufacturing facilities, to our customers, the most economical and environmentally friendly transportation alternatives are determined to address both efficiency and impact on the environment.

MOBILE DEVICE LIFECYCLE SOLUTIONS

We are the global leading provider of mobility device life-cycle services for carriers, retailers, OEMs and corporations worldwide. Our collections span a diverse network of channels including carrier, insurance, enterprise, retailer, charity and consumer direct. Our industry-leading technology platform includes mobile apps, RapidQuote, Device MD, retail and partner integrated and consumer direct. We carry the broadest set of OEM certifications in the industry.

TELECOMMUNICATIONS WILL
HELP MINIMIZE THE OVERALL
COST OF OWNERSHIP

TELECOMMUNICATIONS

Clover's telecommunication solutions support the expansion, maintenance, and technology migration of communication networks by providing hardware, test and repair, asset recovery, and materials management solutions for data, wireless, and wireline networks. We help organizations minimize the overall cost of ownership by analyzing network assets through the entire life-cycle and providing a complete end-to-end telecommunication asset management solution.





IMAGING FIGURES

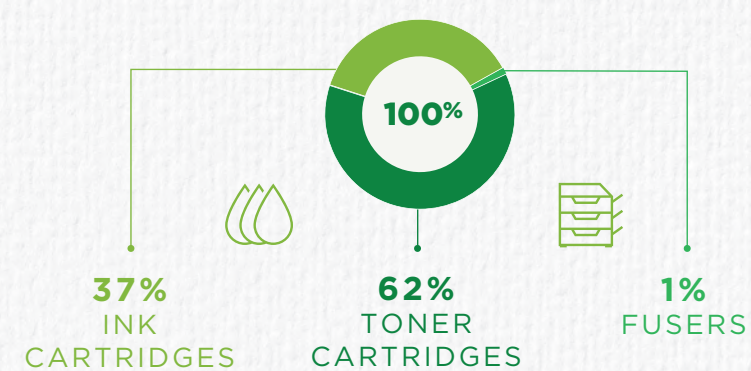
GLOBAL
COLLECTIONS



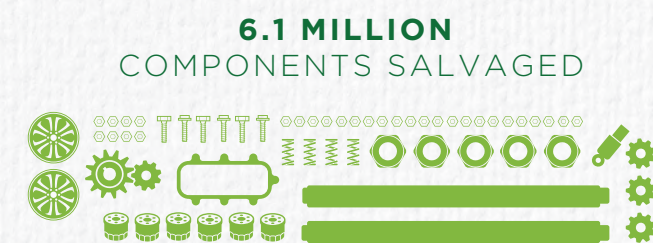

34.3 MILLION
CARTRIDGES
COLLECTED


6.3 MILLION
WIRELESS
COLLECTED

REMANUFACTURING
IMAGING SUPPLIES




NORTH AMERICAN
IMAGING
RECLAMATION




WIRELESS FIGURES

**CLOVER
WIRELESS**
CELL PHONES






1.6 MILLION
COLLECTED


712,320
RESOLD

**CLOVER
TELECOM**



13,500

UNITS
REPAIRED

2,310,718 LBS.

DIVERTED PARTS
FROM LANDFILLS

VALUTECH
CELL PHONES




4.8 MILLION COLLECTED


3.2 MILLION REPAIRED


798,614.248lbs DIVERTED FROM
LANDFILLS

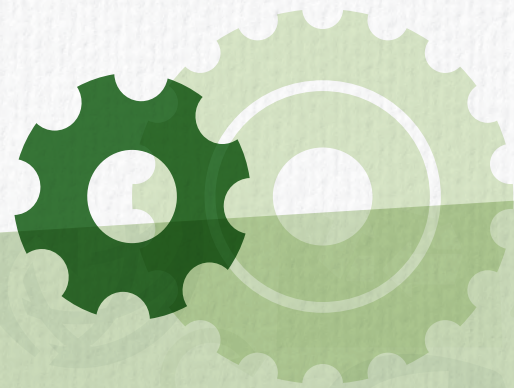
DOING THEIR PART ♦ ♦ ♦ ♦ ♦ ♦ ♦

SUSTAINABILITY

INITIATIVES BY FACILITY

“WE HAVE FOUND BETTER, MORE EFFICIENT WAYS TO REUSE PAPER, TO TRANSPORT OUR GOODS AND TO USE LESS ENERGY, AS WELL AS WAYS TO REPURPOSE OUR SURPLUS MATERIALS.”

- Jim Cerkleski



NORTH AMERICAN FACILITIES

CES | Callexico, CA

We've combined our two Callexico Distribution facilities into one location enabling us to save approximately 96,000 kW of electricity/year resulting in a more responsible use of resources and a savings each month.

In addition, this facility was constructed with skylights eliminating the need for reliance on traditional electricity use during the day. This generated another 360,000 kW/year savings in electrical use.

CES | Oglesby, IL

Oglesby is a warehouse, collection and distribution facility that has taken additional steps in 2015 to set goals and make reductions in water, electricity and gas usage.



CES | Oakville, ON

Our CES facility in Canada did their part by recycling:
Cardboard - 475,771 lbs. **Batteries** - 2,363 lbs.
CP Wires/Covers/Cases - 1,708 lbs. **Toner Bottles** - 21,367 lbs.

Clover Telecom | Irving, TX

Clover Telecom, as an international provider of communications network solutions recycled approximately 2,310,718 lbs. of electronics in 2015. More than 13,500 units were repaired in 2015.

Clover Technologies Group | Ottawa, IL


As a remanufacturer of imaging supplies, we seek ways to make the best use of paper in our functional print tests for monochrome laser toner cartridges. In 2015, our R&D facility in Ottawa, IL, began utilizing both sides of the paper for testing purposes which effectively reduced our paper use in half. Once the paper is fully utilized, it is recycled.

OGLESBY SUSTAINABILITY RESULTS

WATER

- Installed low flow toilets in target areas.
- Screened for water leaks during routine maintenance checks.
- Enhanced associate awareness through training and information updates.
- Enhanced awareness by using posters, labels, information board, etc.
- Monitored monthly water consumption and compared to prior months.

WATER USAGE (GALLONS)

 **2014** - 37,037
2015 - 25,255
Reduction of: 31.8%

ELECTRICITY

- Signs strategically placed to remind employees to shut down electronic devices when leaving for the day.
- Replaced 6 doors, helping to seal heat inside the building and reduce energy usage.
- Roof repairs completed which significantly helped seal in heat and reduce energy usage during the winter months.
- Replaced set back thermostats.


ELECTRICITY USAGE (KILOWATTS)

 **2014** - 199,556
2015 - 185,073
Reduction of 7.26%

GAS

- Identified method to reduce heating levels in non-occupied hours.
- Installed set back thermostats in offices.
- Manual or automatic set back of heating for warehouse areas during nights and weekends.
- Reviewed water heater setting for possible reduction.
- Building wall/ceiling insulation repairs completed.

GAS USAGE (THERMS)

 **2014** - 42,803
2015 - 41,272
Reduction of 3.58%

WASTE TO ENERGY (WTE)

- 3% reduction/year.
- Identified items that could be reused or recycled versus being sent to WTE.
- Sorted plastics by type of plastic to allow for better resale.
- Worked on density of items that have to be sent to WTE, so that we can maximize trailer load, and reduce the number of trips per year required.

OTHER INITIATIVES

Beginning in March of 2015, we initiated the process of saving and reusing molded pulp end caps. This resulted in approximately 63,740 units being saved for reuse.



NORTH AMERICAN FACILITIES CONT.

ERS | Erie, PA

- Shipping protectors, used to protect the rollers in a toner cartridge during shipping, are saved in bulk Gaylords for reuse.
- Instituted the collection and reuse of packaging materials and wood pulp end caps. In 2015, we collected approximately 26 double stacked Gaylords for reuse. An estimated 5000 cartridges were repackaged using these salvaged endcaps.
- Recycled thousands of pounds of material, and kept over 1 million pounds from the landfills:
Cardboard - 1,040,045 lbs
Plastic - 76,630 lbs
Paper - 10,060 lbs
Cartridges/Bottles & Tubes - 169,540 pieces
- With an eye towards decreasing our footprint, the utilization of trash trucks to haul waste each week was changed from once a week to two times per month.

CAU | Ithaca, MI

- Our primary remanufacturing facility in the U.S. for ink cartridges is located in Ithaca, MI. Ithaca's recycling objectives for 2015 included the following:
- Reuse of intermediate bulk containers and smaller plastic containers for cleaning.
 - Use of a single truck for recycling and product pickup from a nearby vendor, eliminating use of common carrier truck and reducing CO2 emissions.
 - Boxes from printer paper are reused for filing documents.
 - Batteries received through recycling are used if still in good condition.
- Items Recycled Include:**
- Corrugated Cardboard
 - Office Paper
 - Plastics - #1, #2, #5, and #6 as well as pallets from inbound product
 - Scrap Metal - Steel and Aluminum
 - Lead Acid Batteries
 - Insulated Wire (Copper)
 - Electronic Chips from Inkjet Cartridges

MSE | Van Nuys, CA

- MSE is Clover's California location for the remanufacturing and distribution of toner cartridges. MSE achieved two key environmental objectives for 2015:
- MSE reduced the amount of waste toner being sent to the landfill. Overall, MSE was able to divert 70,792 pounds of toner from being landfilled. This was achieved by partnering with a company who recycled the toner into new product.
 - MSE reduced the number of cleaning swabs being sent to landfills. The amount of swabs used for cleaning was reduced by 60%.

Valutech | Mexicali, MX

- Valutech is an electronics repair facility located in Mexicali, MX. In 2015, they achieved the following significant objectives:
- Saved 5.9 million paper sheets (11,960 reams) with the new Paper Free RF Test.
 - Test results now saved electronically in our internal database.
 - Reduced greenhouse gas emissions generated during our waste management process by 40% when we restructured the logistics of transporting our residues.
 - Segregated all raw materials and supplies designated as waste in order to identify the parts that were still reusable. These efforts resulted in 20% less solid waste than the prior year.

Mexicali | Mexico

- Our facility in Mexicali is devoted to the remanufacturing of toner cartridges and fusers. Our recycling efforts reaped the following benefits:
- **1,812,198 lbs.** of paper recycled, equivalent to saving a total of 13,974 trees
 - **8,717,071 lbs.** of cardboard recycled
 - **1,812,198 lbs.** of plastic recycled
 - **2,001,795 lbs.** of metal recycled
 - Recovered and reused water generated from air conditioners for use in landscape irrigation

INTERNATIONAL FACILITIES

Portugal

Recycled:

- 46 tons of paper and cardboard
- 2 tons of wood (pallets)
- 12 tons of aluminum
- 16 tons of metal

Paper:

- 60% of paper reused for quality testing
- 2% of paper donated to kindergartens, institutions and other schools
- 38% recycled

Reduced:

- Waste reduced by 33.5 tons
- Electricity reduced by 37,220 Kwh

Vietnam

Reused parts in our cartridge remanufacturing process:

- Recoat 100% of mag rollers in-house
- Recoat/reuse 100% of the PCRs
- Recoat/reuse 100% of the wiper/doctor blades
- Produce small plastic parts in-house by using a percent of our own reground plastic from scrap

Additional recycling programs:

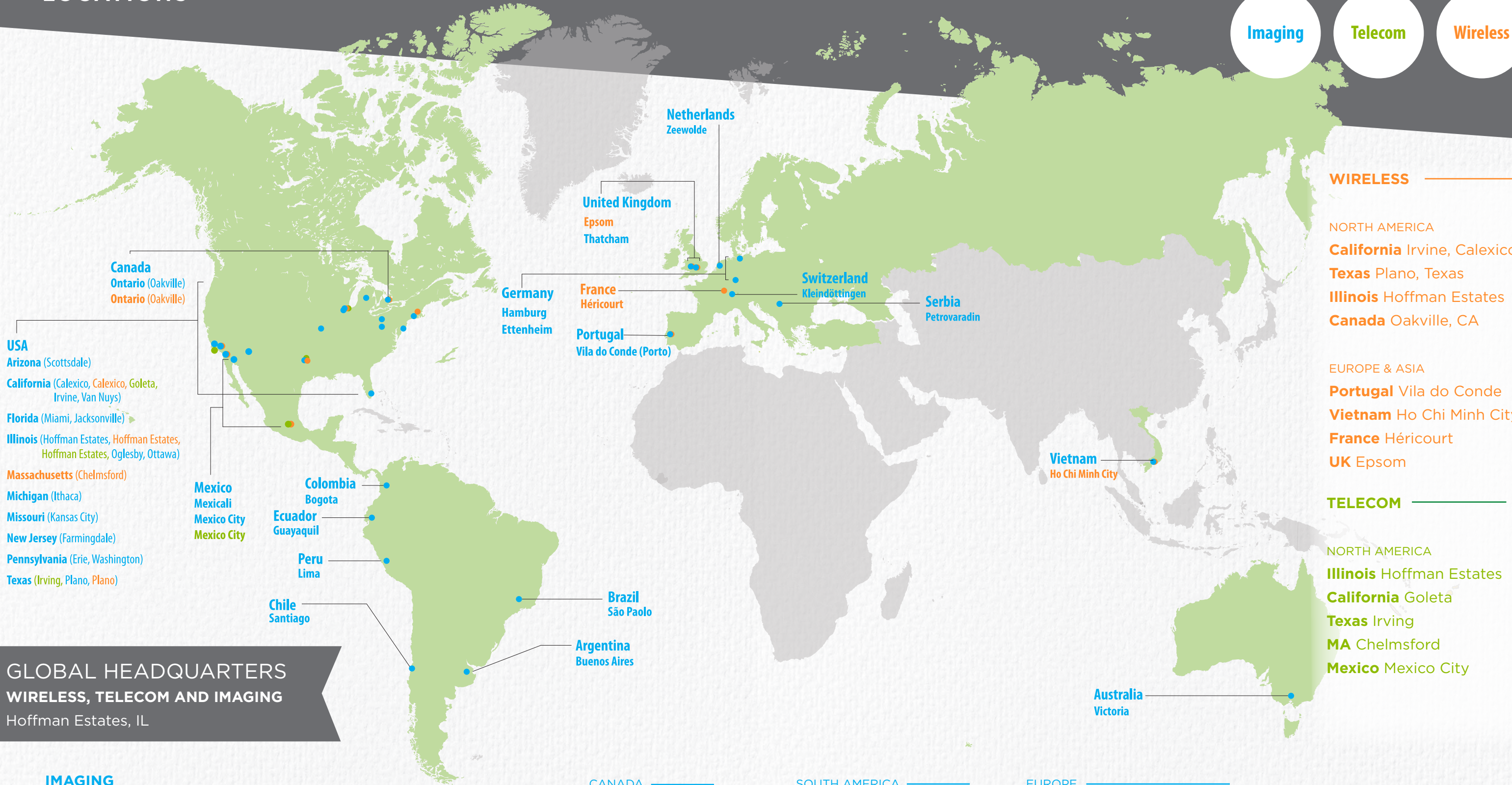
- Repair and rebuild used wooden pallets in-house
- Switched all lighting to LED to save energy

Serbia

- Recycled used toner powder by partnering with specialized companies to use the powder in their production of concrete for road construction
- Provided toner powder to outside companies for remanufacturer into new, usable toner powder
- Reduced the use of natural gas by 25%
- Lowered the amount of additional empty cores used in production by 32.9%

“RECYCLED 46 TONS OF PAPER AND CARDBOARD”





GLOBAL HEADQUARTERS
WIRELESS, TELECOM AND IMAGING
Hoffman Estates, IL

IMAGING

- UNITED STATES
- Arizona Scottsdale
- California Calexico, VanNuys
- Florida Miami, Jacksonville
- Illinois Hoffman Estates, Oglesby, Ottawa
- Michigan Ithaca
- Missouri Kansas City
- New Jersey Farmingdale
- Pennsylvania Erie, Washington
- Texas Plano

CANADA
Ontario, Oakville

MEXICO
Mexicali
Mexico City

SOUTH AMERICA
Argentina Buenos Aires
Peru Lima
Chile Nunoa
Colombia Cota
Ecuador Guayaquil
Brazil Sao Paulo

EUROPE
Portugal Vila do Conde
Germany Hamburgny, Ettenheim
Serbia Petrovaradin
UK Epsom, Thatcham
Switzerland Kleindottingen
Netherlands Zeewolde

AUSTRALIA
Victoria

ASIA
Vietnam Ho Chi Minh City

WIRELESS

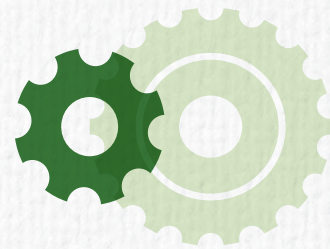
NORTH AMERICA
California Irvine, Calexico
Texas Plano, Texas
Illinois Hoffman Estates
Canada Oakville, CA

EUROPE & ASIA
Portugal Vila do Conde
Vietnam Ho Chi Minh City
France Héricourt
UK Epsom

TELECOM

NORTH AMERICA
Illinois Hoffman Estates
California Goleta
Texas Irving
MA Chelmsford
Mexico Mexico City

PACKAGING



PACKAGING

Clover's innovative designs in packaging are constantly evolving and changing to meet customer demands, quality standards, environmental impact, product protection, and cost considerations.

Some of our changes in 2015 included the following:

Fuser Unit Packaging Improvement – current packaging replaced with SimPak end caps. This enhanced packaging solution protects fusers during shipment, is made out of a minimum of 70% recycled polystyrene beads, and is reusable.

SpeedyPak inserts replaced with 100% recycled and recyclable molded pulp end caps for specific color laser cartridges. Not only is this more eco-friendly and sustainable, it also provides a re-packaging solution when collecting empty cartridges from customers for Clover's collections program.

SALVAGED AND REUSED

161,903

MOLDED PULP END CAPS



12,506

SIMPAK END CAPS



981

REFLEX END CAPS



◆ ◆ ◆ ◆ ◆ ◆ ◆ ◆ ◆ ◆

RESEARCH &

DEVELOPMENT

QUESTION & ANSWER WITH HEYMO HORMANN

How would you characterize an average day at Clover?

Challenging and Fun. I had a conversation with my boss a while back during which I told him that “Challenges make me Tick”, little did I know that he would make sure that my team and I will be on the forefront of providing solutions to the most unique challenges Clover faces. I look forward to these challenges and the prospect of discovering innovative solutions that will ultimately make us what we are today and also help to pave the road for a successful future.

How many individuals work in your department?

31 Team members

Two locations

8 in Van Nuys, CA

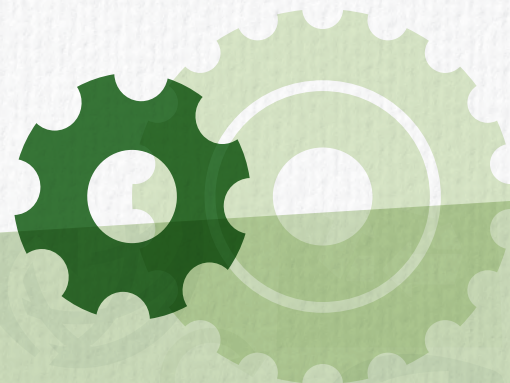
23 in Ottawa, IL.



VICE-PRESIDENT
AUTOMATED
ENGINEERING

How long have you been at Clover?

10 years 4 Months





What do you think sets Clover apart from other remanufacturers?

The solutions Clover provides to the challenges our Customers face in the marketplace. I had the privilege of attending several customer meetings during tours at the Ottawa Technology Center which allowed me to get a better insight into the breadth of Clovers offerings to our customers. Witnessing the positive reaction from our customers to what Clover has to offer while being able to be a part of creating a more sustainable future makes me proud to be part of this team.

Tell us about one of your favorite projects.

If I had to pick one of the many great projects, I would pick the “Fully Automated Inkjet Remanufacturing Cell”. This project not only fulfilled the premise of being able to fully automate the conversion of an integrated print head inkjet core into a product with superior quality but it also united the inkjet team, the automation engineering team and our outstanding vendors into an unbeatable force in the remanufacturing industry.

What would you say is your biggest challenge and why?

I would say that the biggest challenge is finding a balance between what the desire of my internal customers is and what is in the best interest of our external customers and the company as a whole. One of my roles is to be the “gate keeper” of requests that we receive via our ordering system, this means that I have to do a fair amount of research and ask the tough questions in order to determine how justifiable the project is. On the flip side, this also enables me to learn more about Clover’s different business units and to be a better student of the business.

How is sustainability integrated into your job as an engineer?

Every decision we make as an engineering team has to have the aspect of sustainability in mind, this can be as simple as finding the lowest cost products to use in our projects in order to help the sustainability of the company to finding the most innovative and environmentally sustainable methods of cleaning and remanufacturing all of our products.

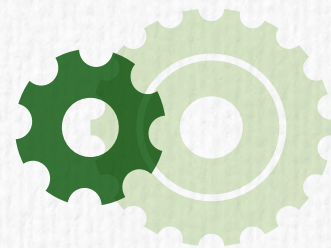
“EVERY DECISION WE MAKE AS AN
ENGINEERING TEAM HAS TO HAVE THE
ASPECT SUSTAINABILITY IN MIND”

What projects would you like to see down the road?

Quality, yield and efficiency improvements in conjunction with waste reduction in our global operations are our top initiatives and automation engineering will continue to play a key role in these areas in the future. We will increase our contributions to the Clover Wireless business units by identifying areas for improvements together with the R&D and production teams that will lead us to a more automated remanufacturing solution similar to what we were able to achieve in the inkjet remanufacturing process.



TRANSPORTATION & LOGISTICS



TRANSPORTATION & LOGISTICS

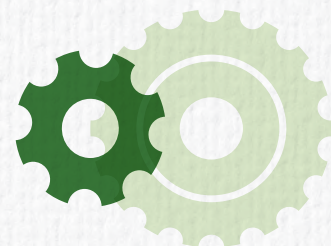
In 2015, Clover shipped to approximately 34 countries around the world. Transportation and Logistics continued our longstanding efforts to minimize the environmental impact of our shipments and improve sustainability through partnership and process enhancement. Taking advantage of our continental network and our committed partner relationships, we were able to recognize a full year solution to minimize the miles that our small package returns traveled by consolidating them in central locations.

Last year, we included over 750,000 small packages into this program which enabled us to reduce the miles our packages traveled in gasoline powered vehicles, and increased our use of more energy efficient rail movements in fully cubed trailers. We also partnered with our internal receivers to reduce the overall number of deliveries by consolidating inbound shipments from vendors to reduce the number of trips carriers had to make into our locations.

We continue to make strides in fully utilizing all available cube space on both inbound and outbound shipments to minimize the number of shipments we are making and to eliminate emissions for moving empty cargo space. To the same end, Clover Logistics has partnered with our Supply Chain arm to make recommendations regarding package sizing and packing materials more effectively to ensure the items we are shipping fully maximize shipping cargo space through improved carton utilization and consolidated customer shipment information. Clover Logistics and Transportation worked with our customers to match shipping vendors with their preferred vendors to minimize the number of different trucks delivering to locations, reducing overall operating vehicles and carbon emissions to our customers.



ENERGY & GAS USE



ENERGY & GAS USE

We are charting our energy and gas use for each facility to identify areas where we can reduce our footprint. By tracking our use from year to year, we seek to initiate programs that will decrease our reliance on electricity and gas. Raising awareness will be one of our primary goals so that each and every person is conscious of how we use electricity and how we can improve in this area.

waste-to-energy (WTE)

By partnering with Covanta Environmental Solutions, and choosing Energy-from-Waste (EfW) technology to manage end-of-life materials not suitable for reuse in our remanufacturing process, 310 MWh of clean energy was generated to the grid. That's enough energy to power 27.4 homes for a full year and save the equivalent of 564 barrels of oil.

310
HOURS



Megawatt Hours
of energy produced
from materials

564
BARRELS



Barrels of oil
saved by choosing EfW
instead of a landfill

27.4
HOMES



Homes powered for 1-year
using electricity produced
from end-of-life materials

“WE SEEK TO INITIATE
PROGRAMS THAT WILL DECREASE
OUR RELIANCE ON ELECTRICITY
AND GAS”



Clover's patented technologies improve print quality and promote resource efficiency. Clover's intellectual property portfolio now consists of 62 issued patents and 27 patents pending (U.S. and foreign).



27
PATENTS
PENDING



PRINT
QUALITY



In 2015, Clover obtained four new U.S. Patents, namely U.S. Patent Nos. 9,207,657; 9,201,376; 9,146,533; and 8,995,873, which illustrate Clover's ongoing commitment to offer innovative high quality products while reducing waste. The technological advances described in these patents promote the efficient use of resources by facilitating the reuse of existing components during manufacturing operations.



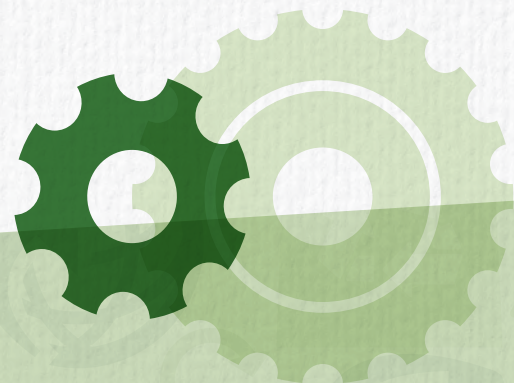
♦ ♦ ♦ ♦ ♦ ♦ ♦ ♦ ♦ ♦

SUSTAINABLE

PROGRAMS

“I AM VERY PROUD OF OUR
COMMITMENT TO PRODUCING
QUALITY PRODUCTS AND OUR
EFFORTS IN GIVING BACK
TO THE COMMUNITY”

- Jim Cerkleski



FUNDING FACTORY

Funding Factory is Clover’s recycling fundraiser for schools, non profits and churches.



Our results for 2015:

- Over \$1.1 million in funding created through recycling for participating schools and non-profit organizations
- 14,500+ organizations benefited in 2015
- 2.7+ million units were diverted from landfills based on the efforts of Funding Factory participating organizations
- Over 1 million lbs. of materials collected
- Participants’ efforts to reuse available boxes for shipping led to a 37% reduction in the number needed in 2014, and a 60% reduction in the number of new boxes required in 2013
- Since 1997, the total number of units collected = 46,860,060
- Since 1997, the total amount paid out to initiatives under the Funding Factory Program = \$32,863,031.20



PRINT RELEAF

Clover has made great strides in the last 12 months in ramping up its reforestation projects with PrintReleaf™.



Using patented technology that not only measures consumption, but tracks its reforestation partners to ensure fulfillment, PrintReleaf™ guarantees to certifiably releaf all forest products consumed by its customers.

In 2015, PrintReleaf™, on behalf of Clover, planted 4,874 trees to offset the environmental impact of Clover’s dealers’ and end users’ paper consumption. Because of increased adoption of this program by Clover dealers, as of February 2016, 2,022 trees have already been planted for the year. At this current rate, we will reforest more than 12,000 trees by the end of 2016!

2009

2015

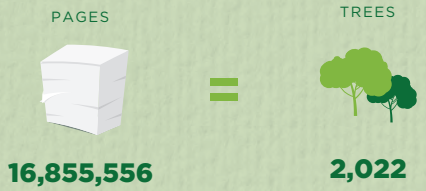
TOTAL UNITS COLLECTED = 361,389,458



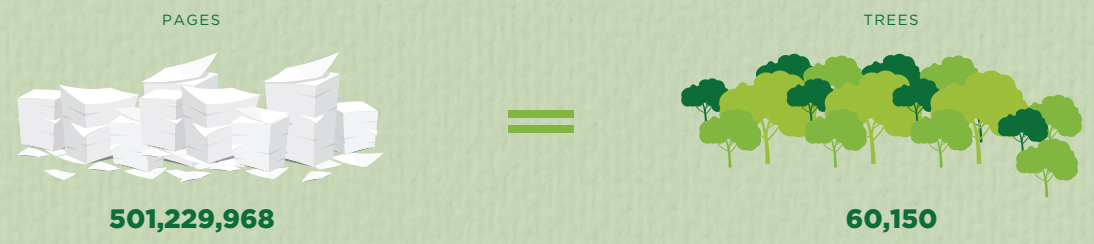
2015



2016 YTD



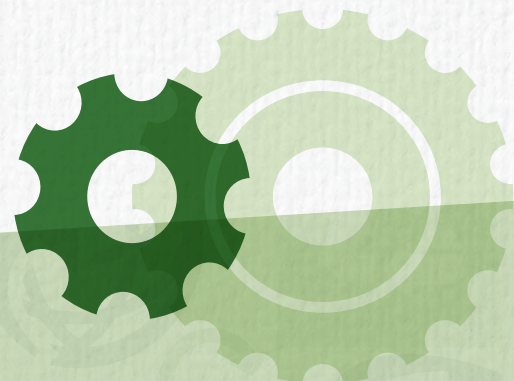
A Lifetime Of PrintReleaf™



CLOVER ♦ ♦ ♦ ♦ ♦ ♦ ♦
GIVES BACK

“GIVING BACK AND GETTING
INVOLVED IN THE COMMUNITIES
WHERE WE WORK AND LIVE IS
AN INTEGRAL PART OF OUR
COMPANY CULTURE”

- Jim Cerkleski





CLOVER GIVES BACK

We believe that involvement in the community has a positive and lasting impact and is an important element of sustainability. Worldwide, our facilities tailor their own philanthropic efforts to the communities where they live and work.

Some examples of those efforts are highlighted below:

Clover Gives Back Leadership Challenge

The Clover Gives Back challenge was developed to build camaraderie amongst our global teams while giving back to the community. In 2015, Clover donated to organizations throughout the world on behalf of our winning team.

Organizations included:

- Mayville Community Schools
- Pet Project Inc.
- St. Catherine Laboure School
- Deutsche Krebshilfe (German Cancer Aid)
- Big Brothers Big Sisters of Halton
- Folds of Honor
- Westlake High School
- Wounded Warriors
- American Heart Association
- Casa de Retiro El Abuelo Feliz SC
- St Peter's RC Primary School PTA
- INK180
- Feed My Starving Children

North America

Clover's North American teams supported the following organizations through various fundraising and volunteer efforts in 2015:

Ottawa, IL, and Hoffman Estates, IL

- Gigi's Playhouse – Down Syndrome achievement centers
- Illinois Youth Service Bureau
- Illinois Valley Food Pantry
- James Dankenbring Memorial Scholarship presented to a graduating senior at Mendota High School, Mendota, IL
- Special Olympics of IL
- Little City in Palatine, IL
- The Hunger Task Force

Erie, PA

- Habitat for Humanity
- Donation Drive for our Troops in Iraq
- Holiday Food Drive for the Second Harvest Food Bank

Ithaca, MI

- \$1,230.50 for Fostering Joy Program in Gratiot County – which helped with Christmas gifts for 15 teens in the foster care program
- \$7,700.00 donated for Gratiot County Food Pantry

Irving, TX

- Special Olympics – 19 employees volunteered approximately 100 hours of their time to Special Olympics
- Angel Tree – 30 employees combined their efforts to purchase gifts for children

and families over the holidays

Mexicali, MX

LOCAL ORPHANAGE - CASA HOGAR

In Mexicali, Mexico, over 40 Clover associates spent their time and provided funding to sponsor a local orphanage at Christmas. They purchased gifts, participated in a special lunch and spent time with the children.

LA CASITA

- Provided education for one year for a student at La Casita. La Casita services over 70 students between the ages of 4 and 56 with Downs, cerebral palsy or autism.
- Provided Scholarships for Disabled Students – Sponsored students with disabilities through high school or technical school
- Provided Scholarships for Low Income Students with a high GPA - Sponsored several low income students with qualifying GPAs enabling them to attend the local University in Mexicali

Sponsorships

- Sponsor training for one fireman each year at the local fire station
- Donated to the Red Cross

Valutech, Mexicali, MX

- Conducted fundraising and collection of non-perishable food for victims of Hurricane Patricia in the Gulf of Mexico. 1,600 lbs of food was sent to the Government Aid Center in the affected zone
- Donated to City's Day of the Police Corps and to the maintenance of the city's police patrol cars



- Donated to City's Day of the Firemen activities

INTERNATIONAL

Portugal

- Provided on-the-job training for students attending the local University for course work credit

Serbia

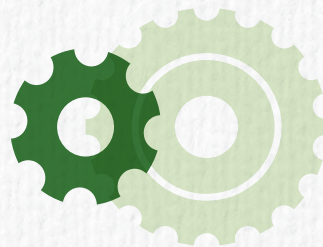
- Annual New Year's party held for employees and their children
- Donation made to a local hospital damaged during a flood in 2014
- Company-wide participation in Cap for Handicap program which buys necessary equipment for paraplegic and quadriplegic people in need

Australia

Clover Australia is a long-time supporter of LandCare Australia. LandCare Australia is a not-for-profit funded by government, benefactors and sponsors to raise money to finance thousands of volunteer groups who undertake land reclamation and environmental improvement programs. By partnering with CartCollect (Clover's core collection program in Australia), money is donated as a sponsor and allows Clover to align itself with the most well-known environmental group in the country.

“OVER 40 CLOVER ASSOCIATES
SPENT THEIR TIME AND PROVIDED
FUNDING TO SPONSOR A
LOCAL ORPHANAGE”

AWARDS & ACHIEVEMENTS



AWARDS

BTA 2015 Channel's Choice Award Remanufactured Cartridges

Quality Leader Award by Recycling Times

It is the tenth time MSE has received this award, eight of which were awarded by Recharger Magazine before Recycling Times bought the publication.

CERTIFICATIONS*

Blue Angel - RAL UZ-55	ISO 14001:2004
CHAS	ISO 50001:2011
DEKRA Standard V1.2	LGA
DIN Freecolor Biobased H1/H2	OHSAS 18001:2007
UL Ecologo Certification	Responsible Recycling (R2) 2013
EPA WasteWise Partner	STMC
Illinois Recycling Association member	Nordic Ecolabel - SWAN
ISO 9001:2008	TL 9000 (7.4 Repair Services)



*Certifications are facility specific.

Please visit clovertech.com for complete details on Clover's certifications



CLOVER

CLOVERTECH.COM