

6-STEP CARTRIDGE GRINDING PROCESS

RESPONSIBLE RECYCLING

Clover evaluates every empty cartridge that is received - first for remanufacturing and secondarily for material recovery through responsible recycling. We only use the best quality cartridge cores to produce our products and reuse as many components as possible in our remanufacturing processes.



CARTRIDGE EVALUATION

All inbound units are inspected and designated for remanufacturing or grinding



CARTRIDGES DISASSEMBLED

End-of-life disassembled



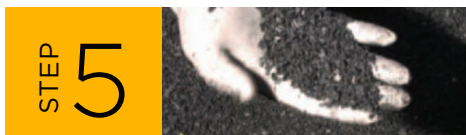
CARTRIDGES SORTED

Components (plastic, blades, and PCR drums) are sorted for recycling



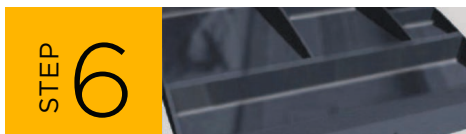
GRINDING

Plastic cartridges are inducted into the grinder to produce plastic regrind



PLASTIC READY FOR USE

Plastic regrind is used in various injection molding processes



NEW PRODUCT DEVELOPMENT

New product is created utilizing post consumer waste which completes Clover's closed loop process

FOR ADDITIONAL INFORMATION

Contact your account manager or visit cloverimaging.com